



CAMPUS FACILITIES

The Institute has created an environment that caters to both body and mind. The management and staff at the Institute are aware of the fact that learning needs an environment that is conducive in all respects. Consequently the aim has been to create an ambience in which students thrive.

The campus houses comfortable hostels exclusively for boys and girls accommodating more than 600 students, wholesome and tasty food catering to varied palates is provided by the canteen in the campus. The College

encourages student participation in the sporting activities and provides facilities for both outdoor and indoor games. A newly constructed indoor Games Complex with a badminton court is another added attraction. Cultural activities to find a place in the agenda with clubs encouraging a range of pursuits. The Institute supports student's participation in cultural programs and youth festivals. To and fro commutation for students from college to hostel and hospital is provided.



KLE COLLEGE OF PHARMACY

P.B.No. 1062, II Block, Rajajinagar, Bengaluru - 560010, Karnataka. Phone: +91(0) 80 23325611. Mobile: 8762528747

klepharmacy.blr@gmail.com / princpharmblr@kledeemeduniversity.edu.in



STRUCTURED TO CREATE THE FINEST PROFESSIONALS



KLE COLLEGE OF PHARMACY, BENGALURU

ACCREDITED BY NBA (6 YEARS) WITH NIRF RANKING / ACCREDITED A⁺ GRADE BY NAAC (3RD CYCLE)

A Constituent unit of KLE Academy of Higher Education & Research, Belagavi.
(Deemed-to-be-University)



COLLEGE OF PHARMACY



STRUCTURED TO
CREATE THE FINEST
PROFESSIONALS

VISION

To create ethical, morally responsible and technically competent Pharmacists

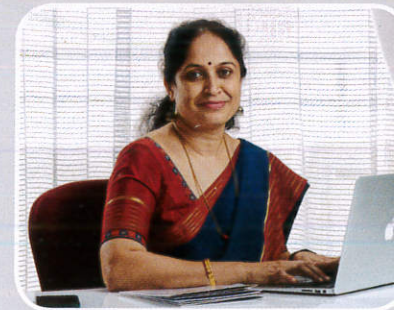
MISSION

To enable our students to become full-fledged and accomplished Pharmacists

To help our students to acquire and disseminate professional knowledge through the fullest commitment for lifelong service

To groom our students to be quality contributors to the healthcare system of the society

To mould our students into compassionate citizens with high ethical and moral values



Dr. Rajamma. A. J
Principal

The Sardar Veeranagowda V. Patil School of Pharmacy, Bengaluru, pioneered professional pharmacy education in the city by introducing a diploma course in 1976, credited to the KLE Society. Subsequently, the society expanded its offerings with the establishment of the KLE College of Pharmacy in 1992, which later became a constituent unit of KLE Academy of Higher Education and Research in 2009. Accredited by NBA for six years and recognized by AICTE and PCI, the college boasts experienced faculty and a consistent track record, with alumni excelling in diverse assignments worldwide. The campus provides excellent facilities, including a well-stocked library, Wi-Fi connectivity, and separate hostels. Notably, the college stands out in research, consultancy, and extension activities, with facilities like an off-campus Basic Science Research Centre and a pilot plant. Recognized as a Centre for Innovative Science Engineering and Education by the Karnataka government's Vision Group, the college has secured grants from various bodies and completed numerous consultancy projects. Moreover, its collaborations with prestigious institutions like the Indian Institute of Science and the University of Mississippi to enhance research opportunities. The

faculty's achievements, including awards for research publications and NSS activities, further highlight the college's commitment to excellence in academia and beyond.

Pharmacy Programs

Under-Graduate Program 4 Years

- B.Pharm

Post-Graduate Programs 2 Years

M. Pharm

- M.Pharm in Pharmaceutical Chemistry
- M.Pharm in Pharmaceutics
- M.Pharm in Pharmacognosy & Phytochemistry
- M.Pharm in Pharmacology
- M.Pharm in Pharmaceutical Analysis

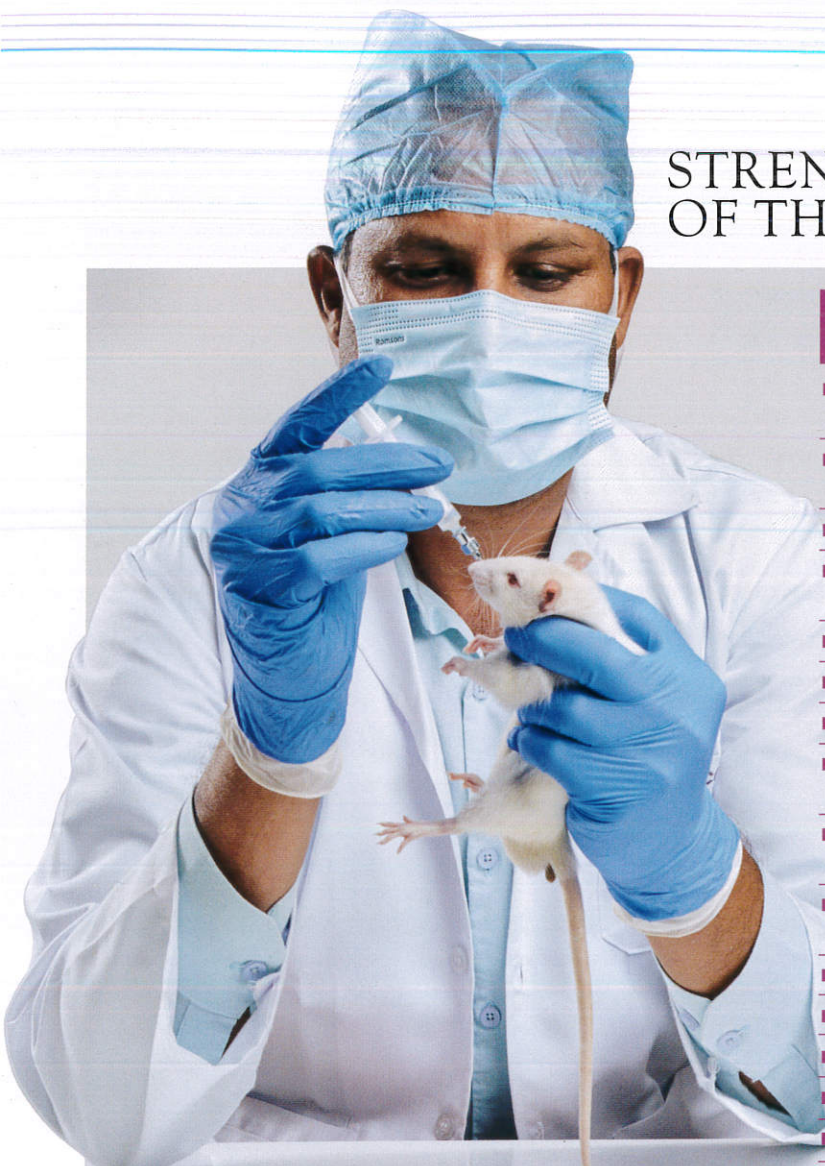
Doctor of Pharmacy (Pharm. D) 6 Years

Ph.D Program





STRENGTHS OF THE COLLEGE



National and International Collaborations

- Department of Interdisciplinary medicine University of Bari school of medicine, Italy
- Department of Biological Sciences, The University of Texas, United States
- REGA Institute for Medical Research, Belagavi
- Green Chem Herbal Extracts and Formulations Bengaluru
- Natural Remedies Pvt. Ltd, Bengaluru
- Group Pharmaceuticals Limited, Bengaluru
- Ashland India Private Limited, Mumbai
- Nuwill Research and Innovations Private Limited, Bengaluru
- K.L.E. Society's, Institute of Dental Sciences, Bengaluru
- Scinva Chemicals and Pharmaceuticals Pvt. Ltd., Bengaluru
- Christ University, Bengaluru
- Nargund College of Pharmacy, Bengaluru
- Pentacare Ayur Pharma, Bengaluru
- BSGSIMS Research Institute, Bengaluru
- Aster RV, Bengaluru
- Acharya BM Reddy College of Pharmacy, Bengaluru

Awards and Recognitions

- "Outstanding research publication" from VGST, DST, Govt. of Karnataka 2024
- "Prof.(Dr.) C. K. Kokate Gold Medal" award KAHER 2022 and 2024
- "Best Teacher Researcher award" at Convention on Discovery and Development - CDD -2023 at DSU, Bengaluru
- "Best NSS Unit" State award from Government of Karnataka
- "Best NSS Programme Officer" State award from Government of Karnataka
- "STARS Award" for Teachers Instituted by AAGCPA / STARS, American Association of Government College of Pharmacy (Bengaluru) Alumni, New York, USA
- "Accomplished Alumni Award 2020" by AAGCPA/STARS, American Association of Government College of Pharmacy (Bengaluru) Alumni, New York, USA
- "Best Scientist Award" from KLE University Belagavi for 2020
- "Prof. Ambikanandan Misra Research Excellence Award in Pharmaceutics and Drug Delivery" instituted by Association of Pharmacy Teachers of India
- "Award for Research Publication" by Department of Science and Technology, Karnataka Science and Technology Promotion Society, Govt of Karnataka
- "Excellence in Academic Research" by the American Association of Government College of Pharmacy (Bengaluru) Alumni, New York, U.S.A
- "Outstanding Research publication" under the VGST scheme- reg. for the financial year 2018-19

Top 10 Peer reviewed indexed Journals where research papers have been published

- Journal of Controlled release
- International Journal of Biological Macromolecules
- Molecular Pharmaceutics
- Journal of Drug Delivery and Science and Technology
- Cell
- Journal of Medicinal Chemistry
- Translational Oncology
- Molecules
- Gels
- The Pharma Innovation Journal
- Heliyon

Summer Research Fellowship

- IASc-INSA-NASI Summer Research Fellowship-Shiv Nadar University, Tehsil Dadar, Uttar Pradesh
- IASc-INSA-NASI Summer Research Fellowship-Gujarat Biotechnology University, Gandhinagar
- IASc-INSA-NASI Summer Research Fellowship-Tezpur University, Assam
- ICMR-National Institute of Research in Tuberculosis, Chennai





TRAINING AND PLACEMENT CELL

The Training and Placement Cell of K.L.E College of Pharmacy, Bengaluru coordinates various activities such as organizing industrial training programmes, counseling students on career options, organizing guest lectures and pre-placement lectures to train the students to face the interviews. Various campus interviews, Pool-in campus drives and Job Fairs involving Pharma recruiters were arranged. More than 30 prestigious business organizations and companies have been visiting the institute for recruitment drives. Most of the graduating students have been placed successfully in prestigious Pharmaceutical multinational Companies including **Abott (I) Ltd., EliLilly, Aculife Healthcare Pvt. Ltd, IQVIA, Parexel, Alembic Pharmaceuticals Ltd., Biomex Biotech. Ltd, Micro Labs, Himalaya Health care, Adrena Ltd, GSK Pharma Ltd, Medeka, Novartis, Quintiles, Indegene, Centaur Pharmaceuticals, Mylan Laboratories, Astra Zeneca, Novo Nordisk, Strides Arcolab, Alembic Pharmaceuticals, Augmedix and Bioplus Sciences, etc.** The cell has been successful in ensuring 100% placement assistance for the outgoing students in different Pharmaceutical Companies and Higher Education.

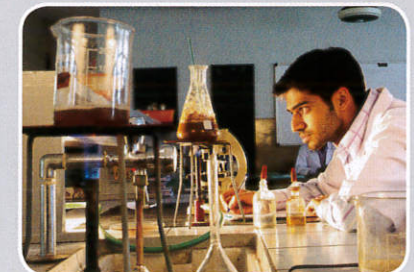


SCOPE OF PHARMACY

 MEDICAL CODING and MEDICAL WRITING	 COMMUNITY PHARMACY	 RESEARCH and DEVELOPMENT	 REGULATORY AFFAIRS AND PHARMACOVIGILANCE	 PHARMACEUTICAL INDUSTRY
 ACADEMIC AND EDUCATION	 ANALYSIS AND TESTING	 QUALITY CONTROL AND ASSURANCE	 PHARMACEUTICAL MARKETING	 CLINICAL RESEARCH

STUDENTS PLACED @





STUDENT SUPPORT SYSTEM

KLE College of Pharmacy, Bengaluru offers a comprehensive support system to foster academic excellence and holistic development among its students by tutoring, organizing seminars and guest talks, and encourage students to attend conferences and workshops for presenting research papers.

Through Innovation and Incubation cell students are encouraged to nurture their creative ideas and assisted with financial support from University for executing research projects. Students are encouraged to participate in academic and extracurricular activities at the regional, state, and national levels for holistic development. Universities recognizes outstanding performance of students in academic and extracurricular activities in the form of academic scholarship, travel scholarship, research scholarship and, extra-curricular and sports scholarship.

Finishing school programme is organized exclusively for outgoing students to equip them with required industrial skills and institution provides coaching classes for the Graduate Pharmacy Aptitude Test (GPAT) to enhance student performance.

Practical exposure is facilitated through industrial visits, internships, and training programs, enhancing students' understanding of real-world scenarios. In addition, a robust support system comprising mentor-mentee relationships, parent-teacher meetings, anti-ragging initiatives, and grievance redressal mechanisms ensures holistic student development and a safe learning environment.



- Financial assistance for both UG and PG research from KAHER
- G-PAT Coaching classes Pre-placement Training Industry-Academia interaction
- Financial support for award-winning students in academic and extra-curricular activities
- Institute assists industry visits, internship, and industrial training programs
- Student monitoring through mentor-mentee system, parents-teachers meeting, Anti-ragging cell, Grievance redressal, and internal complaint cell

